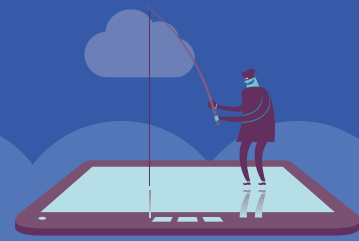




ES 2016

The 4th International Conference on Enterprise Systems
2-3 November, Melbourne, Australia
<http://www.es2016.conferences.academy>



CALL FOR PAPERS

Enterprise Systems (ES), also referred to as Enterprise Information Systems, has become increasingly popular over the last 20 years because it integrates and extends business processes across the boundaries of business functions and corporate walls, as well as country border lines.

Technically sponsored by IEEE Systems, Man and Cybernetics Society, International Conference on Enterprise Systems focuses on both the technical and application aspects of enterprise systems and the complex and cross-disciplinary problems of enterprise integration. Apart from that, the conference deals with methods and technologies for the development, adoption, and application of context-rich enterprise systems leading to smart machines or intelligent cloud services.

The conference committee invites submissions of applied or theoretical research and application-oriented papers on all topics of Enterprise Systems. ES2016 proceedings will be included in IEEE Xplore.

Important Dates:

- Paper Submission Due: 31/05/2016
- Author Notification Due: 15/07/2016
- Camera Ready Copy Due: 25/07/2016
- Conference Date: 2-3/11/2016

Areas of Interest (not limited to):

- Enterprise Modelling
- Decision Support Systems
- Cloud computing
- Big Data
- Privacy Preserving
- Industry 4.0
- Information Governance
- Enterprise Architecture

Selected top quality papers will be invited for extension for the special issues of international journals:

- *Enterprise Information System* (SCI-indexed, ERA2010 rank A)
- *Journal of Industrial Integration and Management* (World Scientific)
- *Journal of Industrial Information Integration* (Elsevier)
- *Journal of Management Analytics* (Taylor & Francis)

Submissions:

- All papers will be double-blind reviewed by the Program Committee on the basis of technical quality, relevance to ES2016, originality, significance, and clarity. Papers must be submitted in PDF format through <https://www.easychair.org/conferences/?conf=es2016>
- All submissions should use IEEE two-column style. Templates are available from http://www.ieee.org/conferences_events/conferences/publishing/templates.html
- Full papers present final result. They must not exceed 12 pages. Short papers can contain preliminary results. They must not exceed 8 pages
- Submission of a paper is regarded as a commitment that, should the paper be accepted, at least one of the authors will register and attend the conference to present the work.

Steering Committee Chairs:

- Dr. Aurora Gerber, Meraka Institute, CSIR, South Africa (IEEE SMC EAE TC Chair)
- Prof. Alta Van der Merwe, University of Pretoria, South Africa (IEEE SMC EAE TC Chair)
- Prof. Li Xu, Old Dominion University, United States (IEEE SMC EIS TC Co-Chair)

Program Committee Co-chairs:

- Dr. Gang Li, Deakin University, Australia
- Prof. Yale Yu, InfoSys, Australia